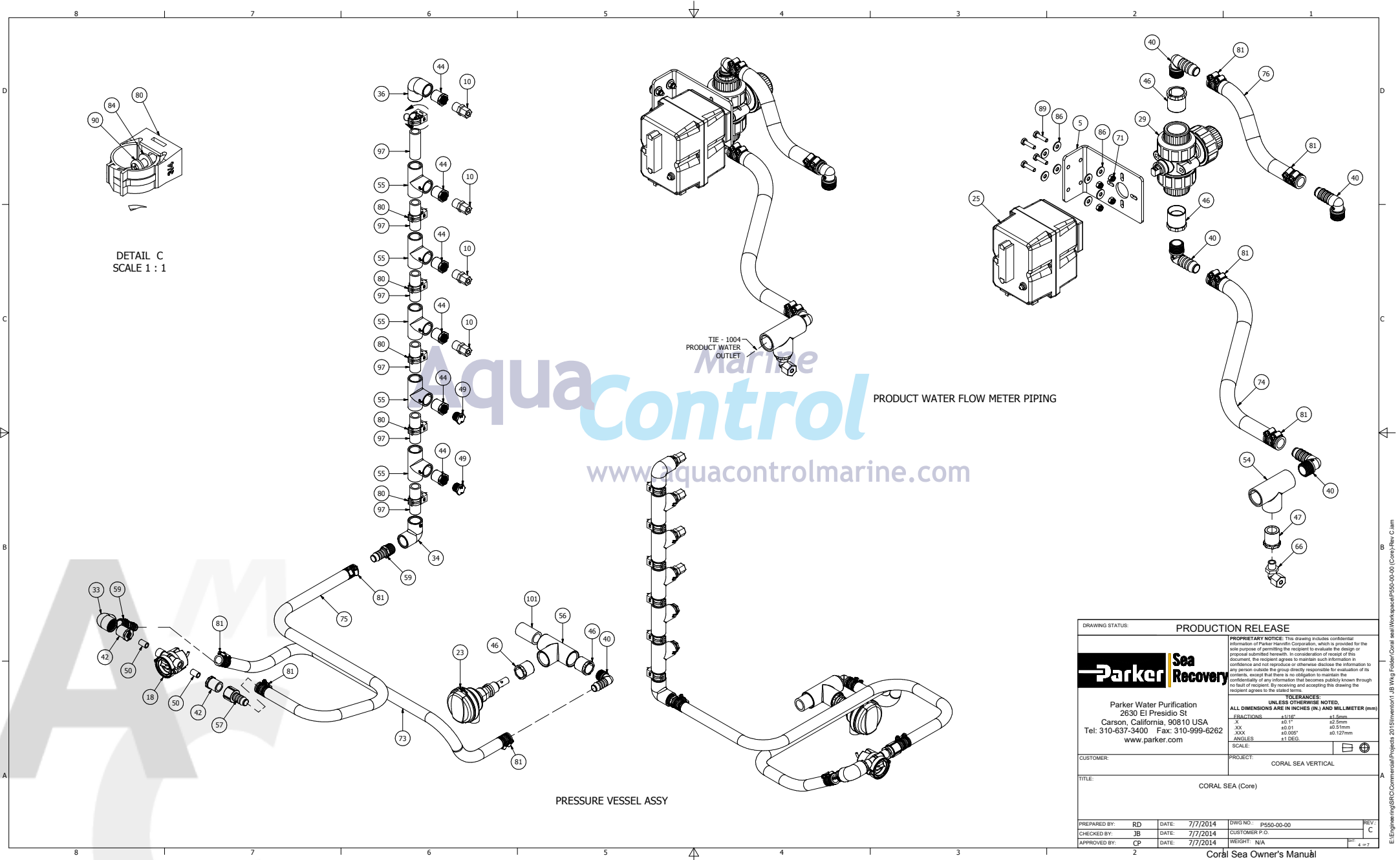
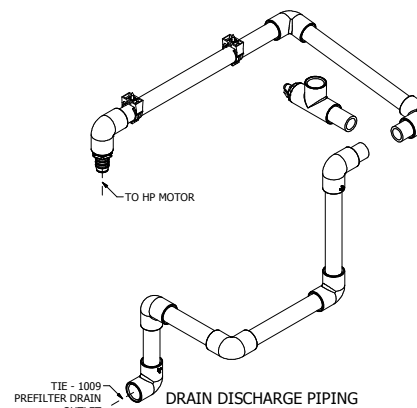
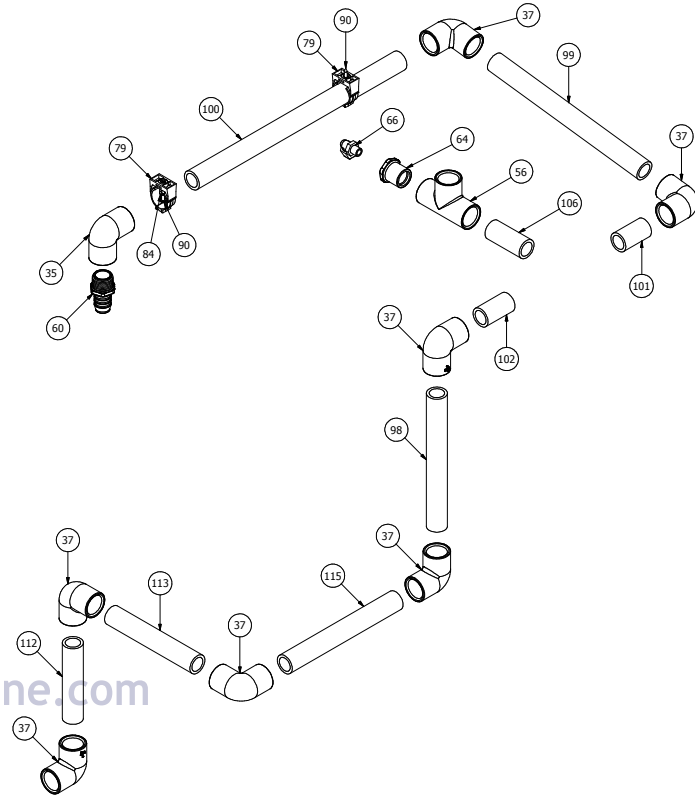


DRAWING STATUS:		PRODUCTION RELEASE	
		<small>PROPRIETARY NOTICE: This drawing includes confidential information of Parker Hannifin Corporation, which is provided for the sole purpose of permitting the recipient to evaluate the design or proposal submitted herewith. In consideration of receipt of this document, the recipient agrees to maintain such information in confidence and not reproduce or otherwise disclose the information to any person outside the group directly responsible for evaluation of its contents, except that there is no obligation to maintain the confidentiality of any information that becomes publicly known through no fault of recipient. By receiving and accepting this drawing the recipient agrees to the stated terms.</small>	
		<small>TOLERANCES: UNLESS OTHERWISE NOTED, ALL DIMENSIONS ARE IN INCHES (IN) AND MILLIMETER (mm)</small>	
		<small>FRACTIONS: 1/16" ±0.005" 1/8" ±0.005" 1/4" ±0.005" 3/8" ±0.005" 1/2" ±0.005" 3/4" ±0.005" 1" ±0.005"</small>	
		<small>ANGLES: ±1 DEG</small>	
CUSTOMER:		PROJECT:	
CORAL SEA (Core)		CORAL SEA VERTICAL	
TITLE:		CORAL SEA (Core)	
PREPARED BY:	RD	DATE:	7/7/2014
CHECKED BY:	JB	DATE:	7/7/2014
APPROVED BY:	CP	DATE:	7/7/2014
DWG NO.:	P550-00-00	CUSTOMER P.O.:	
WEIGHT:	N/A		







TIE - 1009
PREFILTER DRAIN

DRAIN DISCHARGE PIPING

DRAWING STATUS:

PRODUCTION RELEASE

The logo features the word "Parker" in a large, bold, black sans-serif font. To its right, the words "Sea Recovery" are stacked vertically in a smaller, bold, black sans-serif font. A thick black horizontal bar is positioned behind the text, extending from the left edge of the "Parker" text to the right edge of the "Recovery" text.

Parker Water Purification
 2630 El Presidio St
 Carson, California, 90801 USA
 Tel. 310-637-3400 Fax: 310-999-6262
www.parker.com

PROPRIETARY NOTICE: This drawing includes confidential information of Parker Hannifin Corporation, which is provided for the sole purpose of permitting the recipient to evaluate the design or proposal submitted herewith. In consideration of receipt of this drawing, the recipient agrees to maintain such information in confidence, except that there is no obligation to maintain the confidentiality of any information that becomes publicly known through no fault of recipient. By receiving and accepting this drawing the recipient agrees to the stated terms.

TOLERANCES:

UNLESS OTHERWISE NOTED,
ALL DIMENSIONS ARE IN INCHES (IN) AND MILLIMETER (mm)

FRACTIONS:	±1/16"	±.5mm
XX	±0.1"	±2.5mm
XXX	±0.01"	±0.25mm
XXX	±0.005"	±0.127mm

ANGLES

SCALE:

1"=10.0"

The symbol consists of two concentric circles. The outer circle has a horizontal line passing through its center. The inner circle has a vertical line passing through its center. This symbol indicates that the drawing uses third angle projection.

CUSTOMER:

PROJECT:

CORAL SEA VERTICAL

TITLE:

CORAL SEA (Core)

PREPARED BY: RD DATE: 7/7/2014

DWG NO.: P650-00-00

CHECKED BY: JP DATE: 7/7/2014

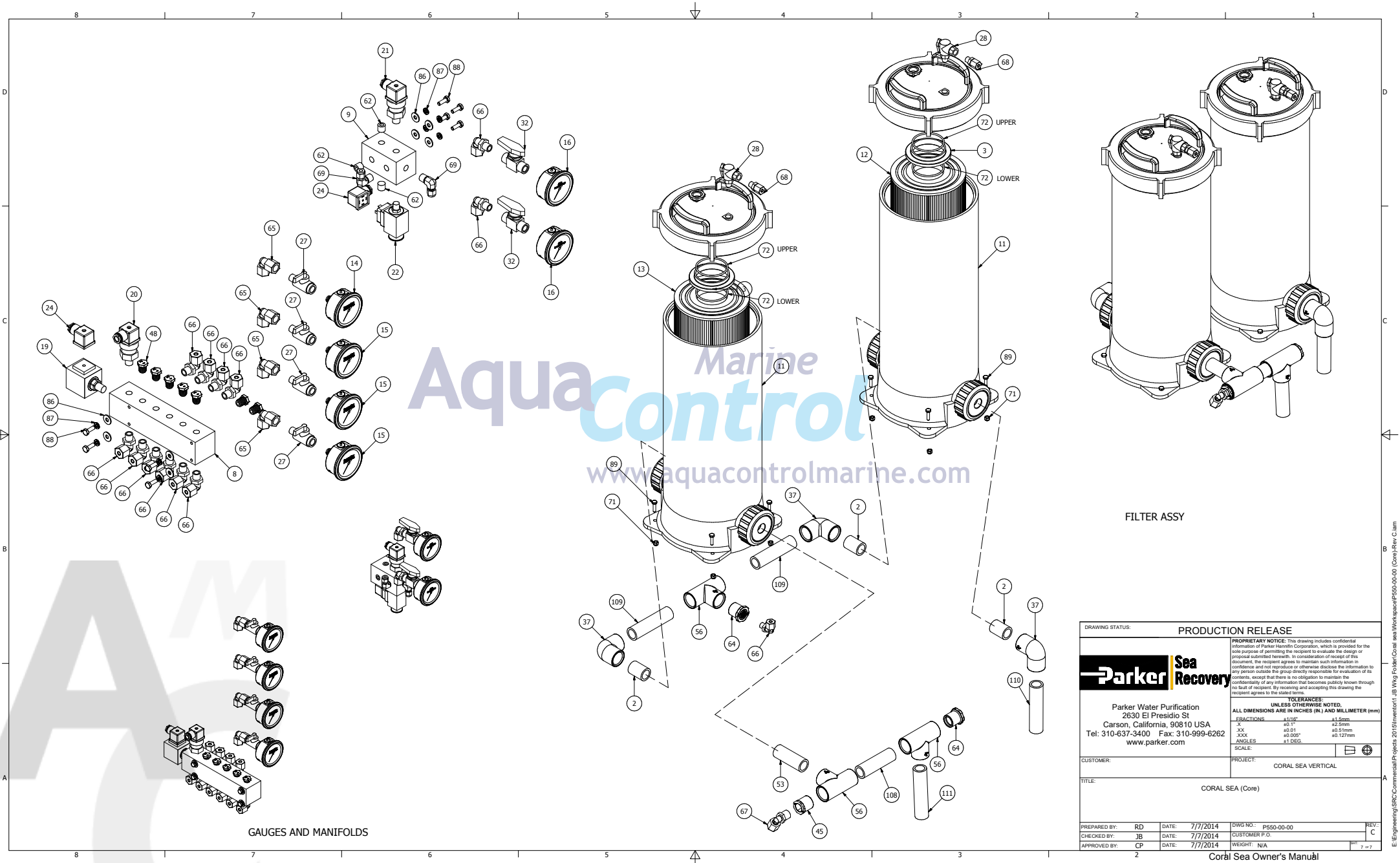
CUSTOMER P.O.

APPROVED BY: CB DATE: 7/7/2014


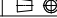
WEIGHT: N/A

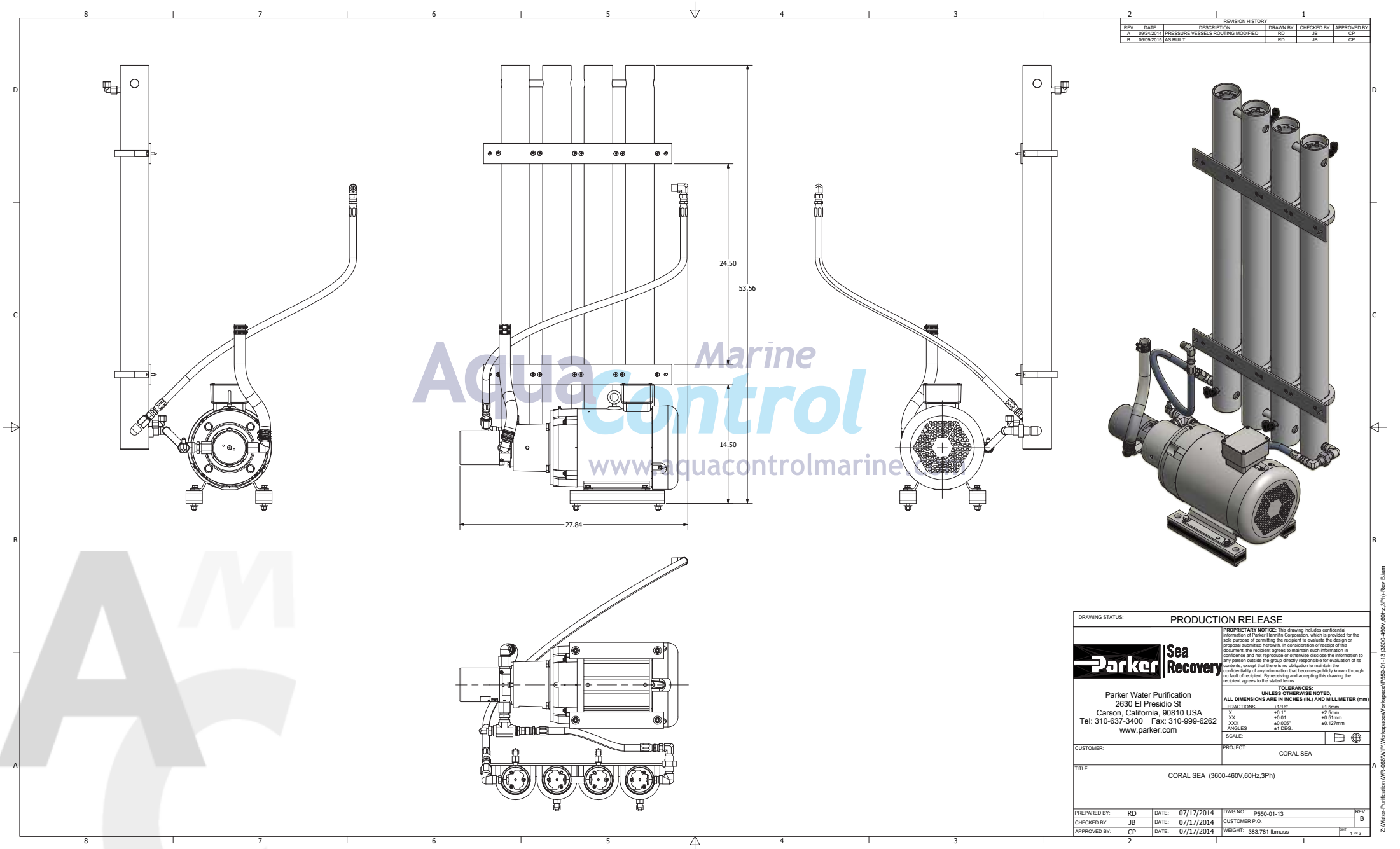
REV: C

1



FILTER ASSY

DRAWING STATUS:		PRODUCTION RELEASE														
		<small>PROPRIETARY NOTICE: This drawing includes confidential information of Parker Hannifin Corporation, which is provided for the sole purpose of permitting the recipient to evaluate the design or proposal submitted hereunder. In consideration of receipt of this document, the recipient agrees to maintain such information in confidence and not reproduce or otherwise disclose the information to any person outside the group directly responsible for evaluation of its contents, except that there is no obligation to maintain the confidentiality of any information that becomes publicly known through no fault of recipient. By receiving and accepting this drawing the recipient agrees to the stated terms.</small>														
		<small>TOLERANCES: UNLESS OTHERWISE NOTED, ALL DIMENSIONS ARE IN INCHES (IN.) AND MILLIMETER (mm)</small>														
		<table><tr><td>FRACTIONS:</td><td>1/16"</td><td>±1/16"</td></tr><tr><td>X</td><td>±1/16"</td><td>±2.5mm</td></tr><tr><td>XX</td><td>±0.01"</td><td>±0.5mm</td></tr><tr><td>XXX</td><td>±0.005"</td><td>±0.127mm</td></tr><tr><td>ANGLES:</td><td>±1 DEG</td><td></td></tr></table>		FRACTIONS:	1/16"	±1/16"	X	±1/16"	±2.5mm	XX	±0.01"	±0.5mm	XXX	±0.005"	±0.127mm	ANGLES:
FRACTIONS:	1/16"	±1/16"														
X	±1/16"	±2.5mm														
XX	±0.01"	±0.5mm														
XXX	±0.005"	±0.127mm														
ANGLES:	±1 DEG															
Parker Water Purification 2630 El Presidio St. Carson, California, 90810 USA Tel: 310-637-3400 Fax: 310-999-6262 www.parker.com		SCALE: 														
CUSTOMER:		PROJECT: CORAL SEA VERTICAL														
TITLE:		CORAL SEA (Core)														
PREPARED BY: RD	DATE: 7/7/2014	DWG NO.: P550-00-00	REV: C													
CHECKED BY: JB	DATE: 7/7/2014	CUSTOMER P.O.:														
APPROVED BY: CP	DATE: 7/7/2014	WEIGHT: N/A	7 = 7													



DRAWING STATUS:

PRODUCTION RELEASE

PROPRIETARY NOTICE: This drawing includes confidential information of Parker Hannifin Corporation, which is provided for the sole purpose of permitting the recipient to evaluate the design or proposal submitted hereunder in consideration of receipt of the document, the recipient agrees to maintain such information in confidence and not reproduce or otherwise disclose the information to any person outside the group directly responsible for evaluation of its contents, except that there is no obligation to maintain the confidentiality of any information that becomes publicly known through no fault of recipient. By receiving and accepting this drawing the recipient agrees to the stated terms.

TOLERANCES:

UNLESS OTHERWISE NOTED,

FRACTIONS: ±1/16" ±1.5mm
X ±0.1" ±2.5mm
XX ±0.01" ±0.5mm
XXX ±0.005" ±0.127mm

SCALE: 1" = 1'-0"

Parker | Sea Recovery

Parker Water Purification
2630 El Presidio St
Carson, California, 90810 USA
Tel: 310-637-3400 Fax: 310-999-6262
www.parker.com

CUSTOMER:

PROJECT:

CORAL SEA

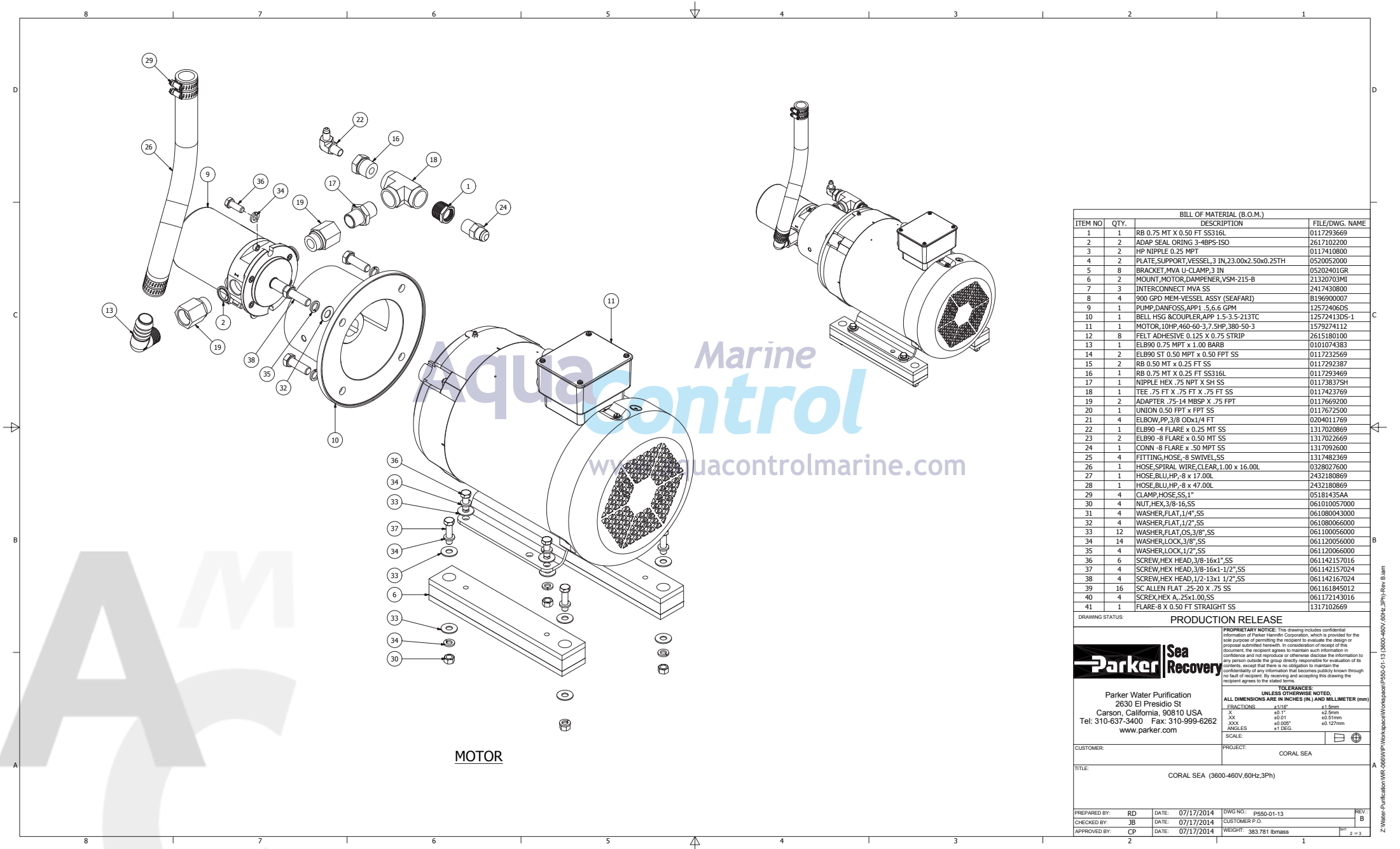
TITLE:

CORAL SEA (3600-460V, 60Hz, 3Ph)

PREPARED BY: RD **DATE:** 07/17/2014 **DWG NO.:** P560-01-13 **REV.:** B

CHECKED BY: JB **DATE:** 07/17/2014 **CUSTOMER P.O.:**

APPROVED BY: CP **DATE:** 07/17/2014 **WEIGHT:** 383.781 lbmass



BILL OF MATERIAL (B.O.M.)			
ITEM NO.	QTY.	DESCRIPTION	FILE/DWG. NAME
1	1	RB 0.75 MT X 0.50 FT SS316L	0117293669
2	2	ADAP SEAL ORING 3-4BPS-ISO	2617102200
3	2	HP NIPPLE 0.25 MPT	0117410800
4	2	PLATE,SUPPORT,VESSEL, 3 IN,23.00x2.50x0.25TH	0520052000
5	8	BRACKET,MVA U-CLAMP,3 IN	05202401GR
6	2	MOUNT,MOTOR,DAMPENER,VSM-215-B	21320703MI
7	3	INTERCONNECT MVA SS	2417430800
8	4	900 GPD MEM-VESSEL ASSY (SEAFARI)	B196900007
9	1	PUMP,DANFOSS,APP1 .5,6.6 GPM	12572406DS
10	1	BELL HSG &COUPLER,APP 1.5-3.5-213TC	12572413DS-1
11	1	MOTOR,10HP,A60-60-3.7,SHP,380-50-3	1579274112
12	8	FELT ADHESIVE 0.125 X 0.75 STRIP	2615180100
13	1	ELB90 0.75 MPT X 1.00 BARB	0101074383
14	2	ELB90 ST 0.50 MPT X 0.50 FPT SS	0117232569
15	2	RB 0.50 MT X 0.25 FT SS	0117292387
16	1	RB 0.75 MT X 0.25 FT SS316L	0117293469
17	1	NIPPLE HEX .75 NPT X SH SS	011738375H
18	1	TEE .75 FT X .75 FT X .75 FT SS	0117423769
19	2	ADAPTER .75-14 MBSP X .75 FPT	0117669200
20	1	UNION 0.50 FPT X FPT SS	0117672500
21	4	ELBOW,PP,3/8 ODX1/4 FT	0204011769
22	1	ELB90 -4 FLARE X 0.25 MT SS	1317020869
23	2	ELB90 -8 FLARE X 0.50 MT SS	1317022669
24	1	CONN -8 FLARE X .50 MPT SS	1317092600
25	4	FITTING,HOSE,-8 SWIVEL,SS	1317482369
26	1	HOSE,SPIRAL WIRE,CLEAR,1.00 x 16.00L	0328027600
27	1	HOSE,BLU,HP,-8 x 17.00L	2432180869
28	1	HOSE,BLU,HP,-8 x 47.00L	2432180869
29	4	CLAMP,HOSE,SS,1"	05181435AA
30	4	NUT,HEX,3/8-16,SS	061010057000
31	4	WASHER,FLAT,1/4",SS	061080043000
32	4	WASHER,FLAT,1/2",SS	061080066000
33	12	WASHER,FLAT,OS,3/8",SS	061100056000
34	14	WASHER,LOCK,3/8",SS	061120056000
35	4	WASHER,LOCK,1/2",SS	061120066000
36	6	SCREW,HEX HEAD,3/8-16x1",SS	061142157016
37	4	SCREW,HEX HEAD,3/8-16x1-1/2",SS	061142157024
38	4	SCREW,HEX HEAD,1/2-13x1 1/2",SS	061142167024
39	16	SC ALLEN FLAT .25-20 X .75 SS	061161845012
40	4	SCREW,HEX A .25x1.00,SS	061172143016
41	1	FLARE-8 X 0.50 FT STRAIGHT SS	1317102669

Parker | **Sea Recovery**

Parker Water Purification
2630 El Presidio St
Carson, California, 90810 USA
Tel: 310-637-3400 Fax: 310-999-6262
www.parker.com

PRODUCTION RELEASE

PROPRIETARY NOTICE: This drawing includes confidential information of Parker Hannifin Corporation, which is provided for the sole purpose of permitting the recipient to evaluate the design or proposal submitted herewith. In consideration of receipt of this document, the recipient agrees to maintain such information in confidence and not reproduce or otherwise disclose the information to any person outside the group directly responsible for evaluation of its contents, except that there is no obligation to maintain the confidentiality of any information that becomes publicly known through no fault of recipient. By receiving and accepting this drawing the recipient agrees to the stated terms.

UNLESS OTHERWISE NOTED, ALL DIMENSIONS ARE IN INCHES (IN.) AND MILLIMETER (mm)

FRACTIONS: ±.010" ±1.5mm
X ±0.1" ±2.5mm
XX ±0.015" ±0.37mm
XXX ±0.005" ±0.127mm

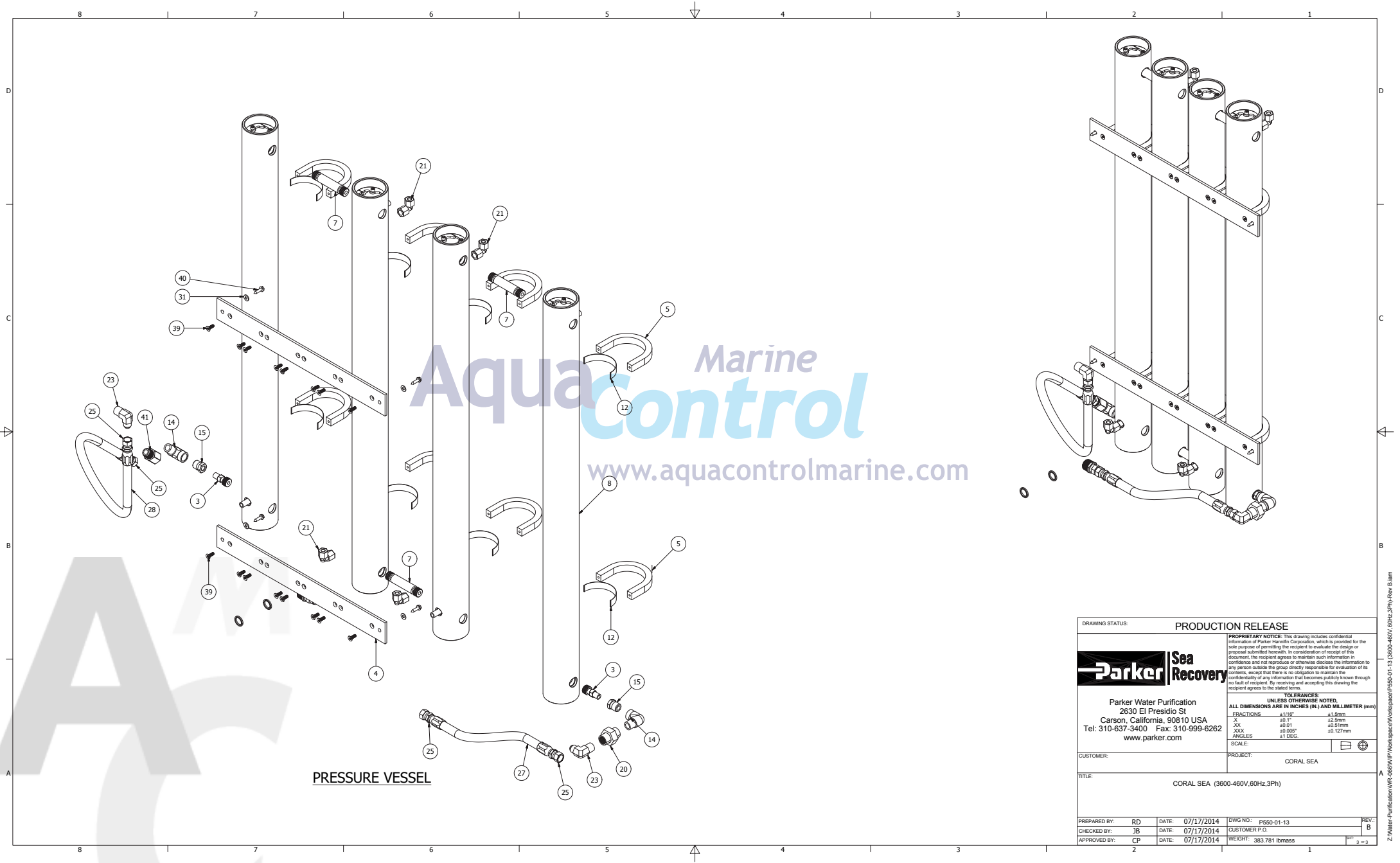
SCALE: ±1 DEG.


CUSTOMER: CORAL SEA

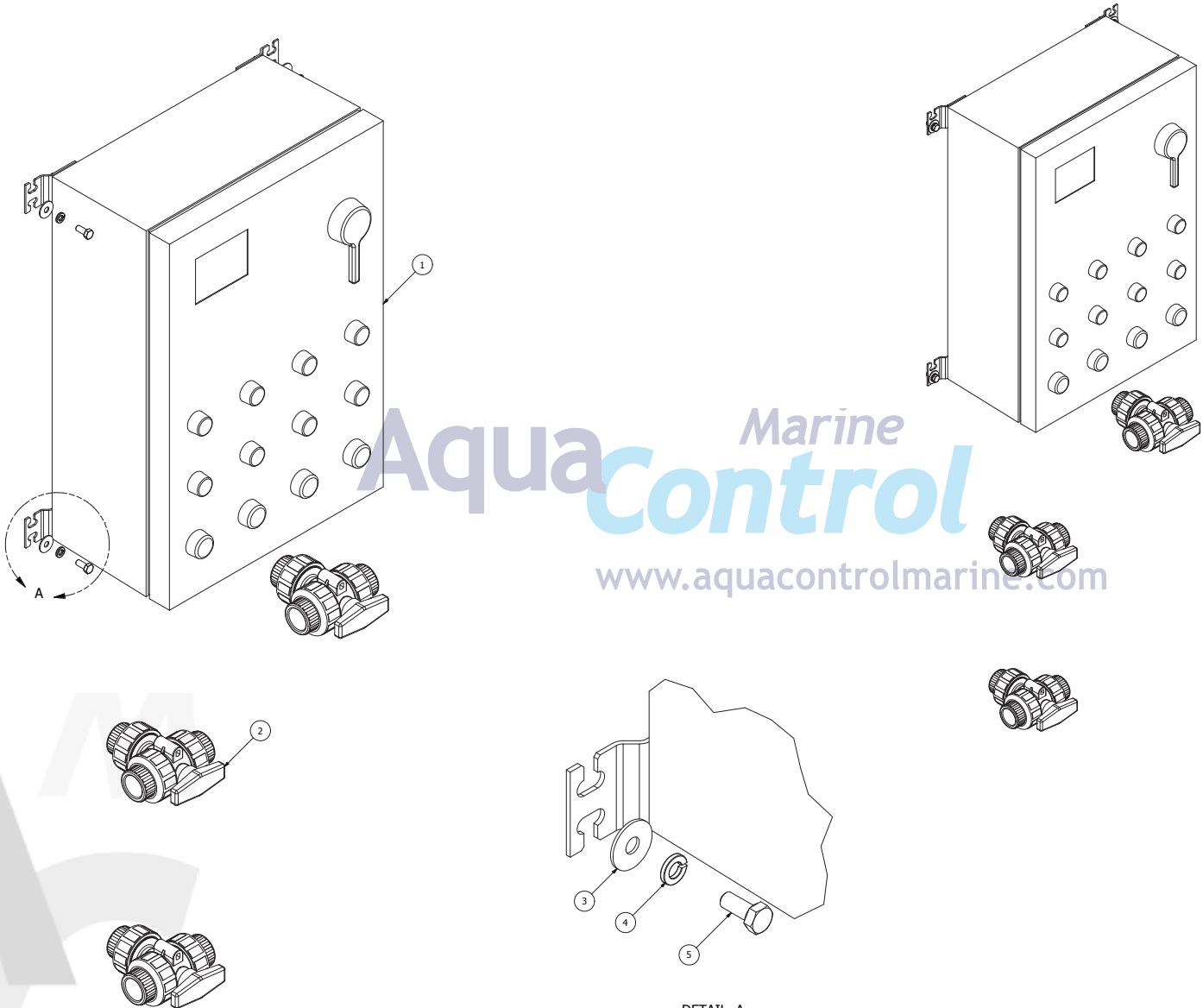
PROJECT: CORAL SEA (3600-460V,60Hz,3Ph)

TITLE:

PREPARED BY: RD DATE: 07/17/2014 DWG NO.: P550-01-13 REV: B
CHECKED BY: JB DATE: 07/17/2014 CUSTOMER P.O.
APPROVED BY: CP DATE: 07/17/2014 WEIGHT: 383.781 lbmass



DRAWING STATUS:		PRODUCTION RELEASE													
		<small>PROPRIETARY NOTICE: This drawing includes confidential information of Parker Hannifin Corporation, which is provided for the sole purpose of permitting the recipient to evaluate the design or proposal submitted hereunder. In consideration of receipt of this document, the recipient agrees to maintain such information in confidence and not reproduce or otherwise disclose the information to any person outside the group directly responsible for evaluation of its contents, except that there is no obligation to maintain the confidentiality of any information that becomes publicly known through no fault of recipient. By receiving and accepting this drawing the recipient agrees to the stated terms.</small>													
		<small>UNLESS OTHERWISE NOTED, ALL DIMENSIONS ARE IN INCHES (IN.) AND MILLIMETER (mm)</small>													
		<table><tr><td>FRACTIONS</td><td>±1/16"</td><td>±1.5mm</td></tr><tr><td>X</td><td>±0.1"</td><td>±2.5mm</td></tr><tr><td>XX</td><td>±0.01"</td><td>±0.5mm</td></tr><tr><td>XXX</td><td>±0.005"</td><td>±0.127mm</td></tr><tr><td>ANGLES</td><td>±1 DEG.</td></tr></table>		FRACTIONS	±1/16"	±1.5mm	X	±0.1"	±2.5mm	XX	±0.01"	±0.5mm	XXX	±0.005"	±0.127mm
FRACTIONS	±1/16"	±1.5mm													
X	±0.1"	±2.5mm													
XX	±0.01"	±0.5mm													
XXX	±0.005"	±0.127mm													
ANGLES	±1 DEG.														
Parker Water Purification 2630 El Presidio St Carson, California, 90810 USA Tel: 310-637-3400 Fax: 310-999-6262 www.parker.com		CUSTOMER: CORAL SEA													
TITLE: CORAL SEA (3600-460V,60Hz,3Ph)		REV: B													
PREPARED BY: RD	DATE: 07/17/2014	DWG NO.: p560-01-13	REV: B 3 = 3												
CHECKED BY: JB	DATE: 07/17/2014	CUSTOMER P.O.													
APPROVED BY: CP	DATE: 07/17/2014	WEIGHT: 383.781 lbmass													
2		1													



DETAIL A
SCALE 1 : 1

REVISION HISTORY					
REV	DATE	DESCRIPTION	DRAWN BY	CHECKED BY	APPROVED BY
A	06/09/2015	AS BUILT	RD	JB	CP

BILL OF MATERIAL (B.O.M.)			
ITEM NO	QTY.	DESCRIPTION	FILE/DWG. NAME
1	1	PANEL, CONTROL, 24x16x9	B59564C001
2	3	VALVE, BALL, 3W, VER, PVC, 1.00 SL	14018119RH
3	4	WASHER, FLAT, OS, 5/16", SS	061100049000
4	4	WASHER, LOCK, 5-16 IN, SS	061120049000
5	4	SCREW, HEX HEAD, .31-18x0.75, SS	061142150012
6	1	KIT, ELECTRICAL, INTERCONNECT	P595640001

DRAWING STATUS: PRODUCTION RELEASE

Parker Sea Recovery

Parker Water Purification
2630 El Presidio St
Carson, California, 90810 USA
Tel: 310-637-3400 Fax: 310-999-6262
www.parker.com

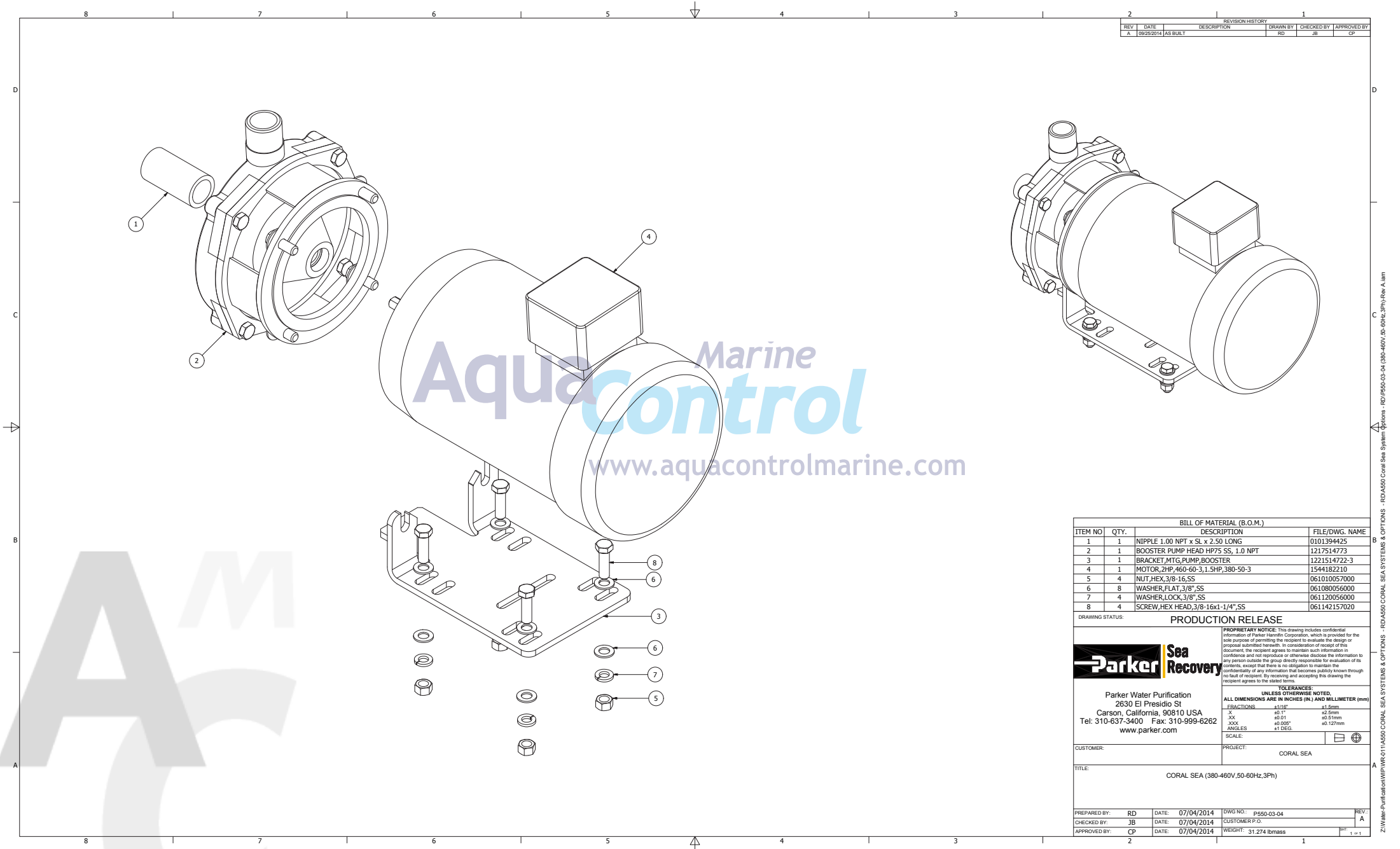
CUSTOMER: PROJECT: CORAL SEA

TITLE: CORAL SEA (BASIC-460V, 60Hz, 3Ph)

PREPARED BY: RD DATE: 07/04/2014 DWG NO.: P550-02-03 REV: A

CHECKED BY: JB DATE: 07/04/2014 CUSTOMER P.O.

APPROVED BY: CP DATE: 07/04/2014 WEIGHT: 169.307 lbmss



REVISION HISTORY				
REV	DATE	DESCRIPTION	DRAWN BY	CHECKED BY
A	09/25/2014	AS BUILT	RD	JB

BILL OF MATERIAL (B.O.M.)			
ITEM NO.	QTY.	DESCRIPTION	FILE/DWG. NAME
1	1	NIPPLE 1.00 NPT x SL x 2.50 LONG	0101394425
2	1	BOOSTER PUMP HEAD HP75 SS, 1.0 NPT	1217514773
3	1	BRACKET,MTG,PUMP BOOSTER	1221514722-3
4	1	MOTOR,2HP,460-60-3,1.5HP,380-50-3	1544182210
5	4	NUT,HEX,3/8-16,SS	061010057000
6	8	WASHER,FLAT,3/8",SS	061080056000
7	4	WASHER,LOCK,3/8",SS	061120056000
8	4	SCREW,HEX HEAD,3/8-16x1-1/4",SS	061142157020

DRAWING STATUS: PRODUCTION RELEASE

Parker Sea Recovery

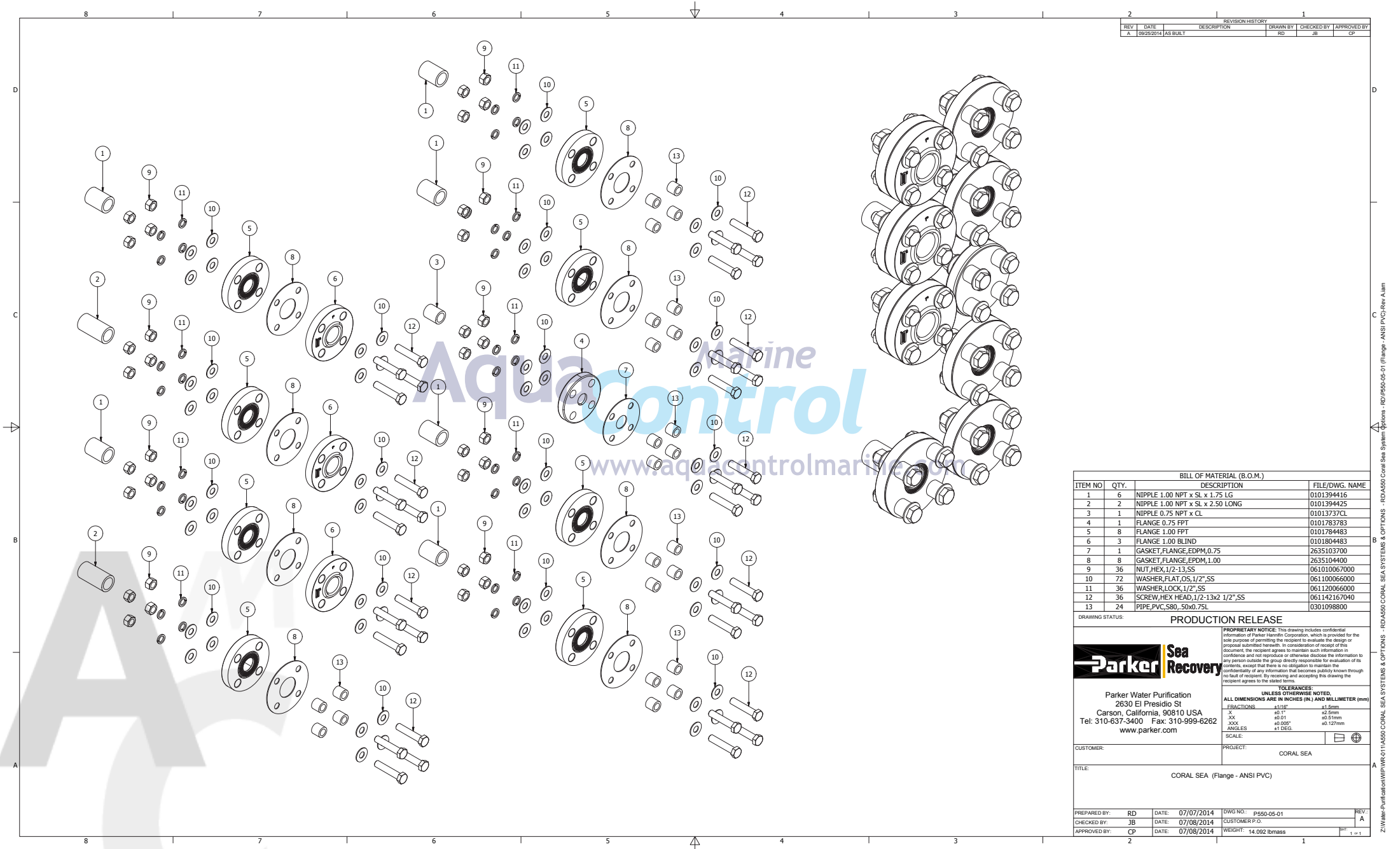
Parker Water Purification
2630 El Presidio St
Carson, California, 90810 USA
Tel: 310-637-3400 Fax: 310-999-6262
www.parker.com

TOLERANCES
UNLESS OTHERWISE NOTED,
ALL DIMENSIONS ARE IN INCHES (IN.) AND MILLIMETER (mm)
FRACTIONS: ±10% ±1.5mm
X ±0.1" ±2.5mm
XX ±0.01" ±0.5mm
XXX ±0.005" ±0.127mm
ANGLES: ±1 DEG

CUSTOMER: PROJECT: CORAL SEA

TITLE: CORAL SEA (380-460V,50-60Hz,3Ph)

PREPARED BY: RD DATE: 07/04/2014 DWG NO.: P550-03-04 REV: A
CHECKED BY: JB DATE: 07/04/2014 CUSTOMER P.O.
APPROVED BY: CP DATE: 07/04/2014 WEIGHT: 31.274 lbmass



REVISION HISTORY		REVISION	DATE	DESCRIPTION	DRAWN BY	CHECKED BY	APPROVED BY
		1	06/25/2014	AS BUILT	RD	JB	CP

BILL OF MATERIAL (B.O.M.)			
ITEM NO.	QTY.	DESCRIPTION	FILE/DWG. NAME
1	6	NIPPLE 1.00 NPT x SL x 1.75 LG	0101394416
2	2	NIPPLE 1.00 NPT x SL x 2.50 LONG	0101394425
3	1	NIPPLE 0.75 NPT x CL	01013737CL
4	1	FLANGE 0.75 FPT	0101783783
5	8	FLANGE 1.00 FPT	0101784483
6	3	FLANGE 1.00 BLIND	0101804483
7	1	GASKET, FLANGE, EPDM, 0.75	2635103700
8	8	GASKET, FLANGE, EPDM, 1.00	2635104400
9	36	NUT, HEX, 1/2-13, SS	061010067000
10	72	WASHER, FLAT, OS, 1/2", SS	061100066000
11	36	WASHER, LOCK, 1/2", SS	061120066000
12	36	SCREW, HEX HEAD, 1/2-13x2 1/2", SS	061142167040
13	24	PIPE, PVC, S80, 50x0.75L	0301098800

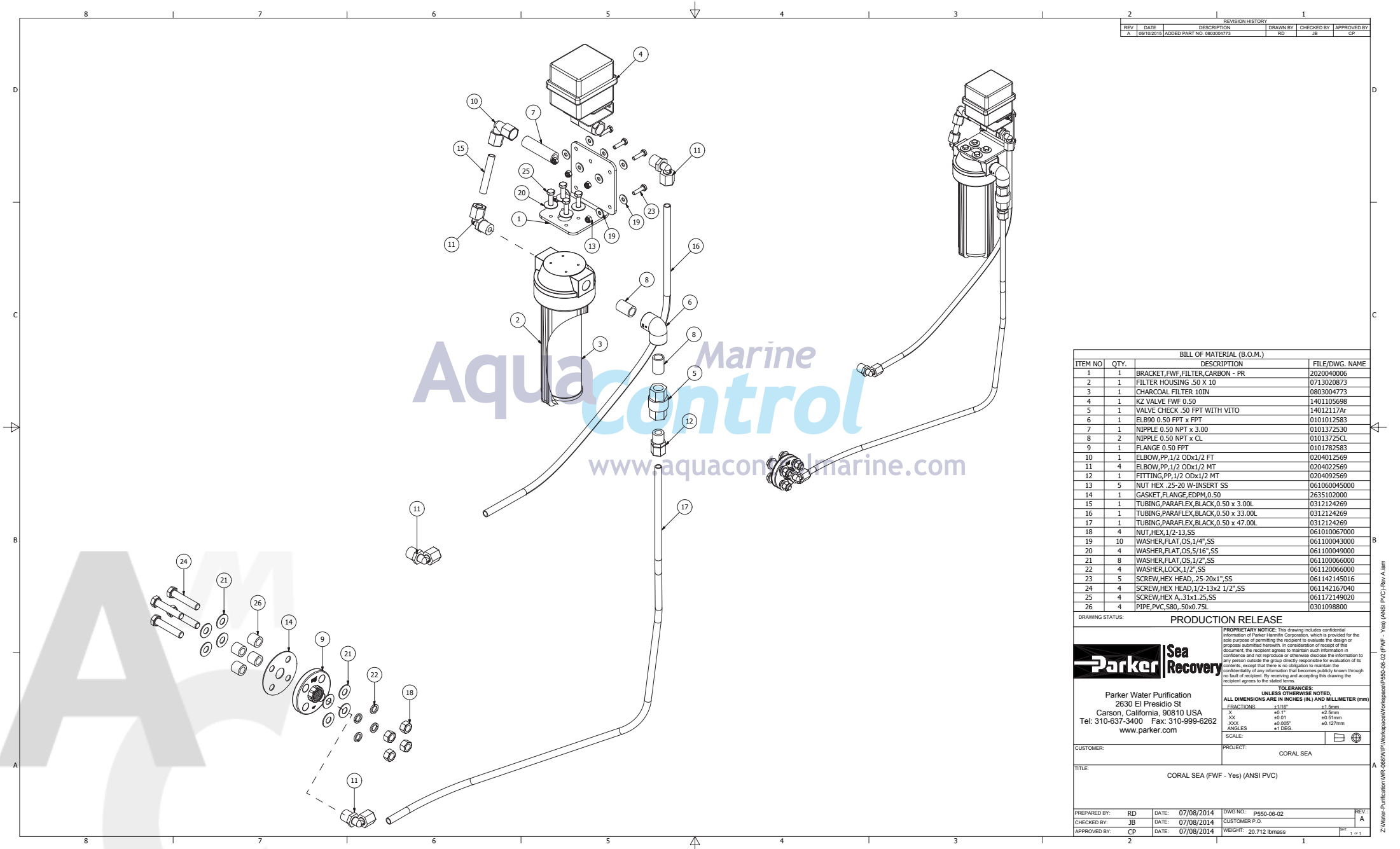
Parker Water Purification
2630 El Presidio St
Carson, California, 90810 USA
Tel: 310-637-3400 Fax: 310-999-6262
www.parker.com

PRODUCTION RELEASE

PROPRIETARY NOTICE: This drawing includes confidential information of Parker Hannifin Corporation, which is provided for the sole purpose of permitting the recipient to evaluate the design or proposal submitted herewith. In consideration of receipt of this document, the recipient agrees to maintain such information in confidence and not reproduce or otherwise disclose the information to any person outside the group directly responsible for evaluation of its contents, except that there is no obligation to maintain the confidentiality of any information that becomes publicly known through no fault of recipient. By receiving and accepting this drawing the recipient agrees to the stated terms.

TOLERANCES
UNLESS OTHERWISE NOTED,
ALL DIMENSIONS ARE IN INCHES (IN.) AND MILLIMETER (mm)

FRACTIONS: 1/16" ±0.001" 1/8" ±0.001" 1/4" ±0.001" 3/8" ±0.001" 1/2" ±0.001" 3/4" ±0.001" 1" ±0.001" 1 1/2" ±0.001" 2" ±0.001" 3" ±0.001" 4" ±0.001" 6" ±0.001" 8" ±0.001" 10" ±0.001" 12" ±0.001" 14" ±0.001" 16" ±0.001" 18" ±0.001" 20" ±0.001" 22" ±0.001" 24" ±0.001" 26" ±0.001" 28" ±0.001" 30" ±0.001" 32" ±0.001" 34" ±0.001" 36" ±0.001" 38" ±0.001" 40" ±0.001" 42" ±0.001" 44" ±0.001" 46" ±0.001" 48" ±0.001" 50" ±0.001" 52" ±0.001" 54" ±0.001" 56" ±0.001" 58" ±0.001" 60" ±0.001" 62" ±0.001" 64" ±0.001" 66" ±0.001" 68" ±0.001" 70" ±0.001" 72" ±0.001" 74" ±0.001" 76" ±0.001" 78" ±0.001" 80" ±0.001" 82" ±0.001" 84" ±0.001" 86" ±0.001" 88" ±0.001" 90" ±0.001" 92" ±0.001" 94" ±0.001" 96" ±0.001" 98" ±0.001" 100" ±0.001" 102" ±0.001" 104" ±0.001" 106" ±0.001" 108" ±0.001" 110" ±0.001" 112" ±0.001" 114" ±0.001" 116" ±0.001" 118" ±0.001" 120" ±0.001" 122" ±0.001" 124" ±0.001" 126" ±0.001" 128" ±0.001" 130" ±0.001" 132" ±0.001" 134" ±0.001" 136" ±0.001" 138" ±0.001" 140" ±0.001" 142" ±0.001" 144" ±0.001" 146" ±0.001" 148" ±0.001" 150" ±0.001" 152" ±0.001" 154" ±0.001" 156" ±0.001" 158" ±0.001" 160" ±0.001" 162" ±0.001" 164" ±0.001" 166" ±0.001" 168" ±0.001" 170" ±0.001" 172" ±0.001" 174" ±0.001" 176" ±0.001" 178" ±0.001" 180" ±0.001" 182" ±0.001" 184" ±0.001" 186" ±0.001" 188" ±0.001" 190" ±0.001" 192" ±0.001" 194" ±0.001" 196" ±0.001" 198" ±0.001" 200" ±0.001" 202" ±0.001" 204" ±0.001" 206" ±0.001" 208" ±0.001" 210" ±0.001" 212" ±0.001" 214" ±0.001" 216" ±0.001" 218" ±0.001" 220" ±0.001" 222" ±0.001" 224" ±0.001" 226" ±0.001" 228" ±0.001" 230" ±0.001" 232" ±0.001" 234" ±0.001" 236" ±0.001" 238" ±0.001" 240" ±0.001" 242" ±0.001" 244" ±0.001" 246" ±0.001" 248" ±0.001" 250" ±0.001" 252" ±0.001" 254" ±0.001" 256" ±0.001" 258" ±0.001" 260" ±0.001" 262" ±0.001" 264" ±0.001" 266" ±0.001" 268" ±0.001" 270" ±0.001" 272" ±0.001" 274" ±0.001" 276" ±0.001" 278" ±0.001" 280" ±0.001" 282" ±0.001" 284" ±0.001" 286" ±0.001" 288" ±0.001" 290" ±0.001" 292" ±0.001" 294" ±0.001" 296" ±0.001" 298" ±0.001" 300" ±0.001" 302" ±0.001" 304" ±0.001" 306" ±0.001" 308" ±0.001" 310" ±0.001" 312" ±0.001" 314" ±0.001" 316" ±0.001" 318" ±0.001" 320" ±0.001" 322" ±0.001" 324" ±0.001" 326" ±0.001" 328" ±0.001" 330" ±0.001" 332" ±0.001" 334" ±0.001" 336" ±0.001" 338" ±0.001" 340" ±0.001" 342" ±0.001" 344" ±0.001" 346" ±0.001" 348" ±0.001" 350" ±0.001" 352" ±0.001" 354" ±0.001" 356" ±0.001" 358" ±0.001" 360" ±0.001" 362" ±0.001" 364" ±0.001" 366" ±0.001" 368" ±0.001" 370" ±0.001" 372" ±0.001" 374" ±0.001" 376" ±0.001" 378" ±0.001" 380" ±0.001" 382" ±0.001" 384" ±0.001" 386" ±0.001" 388" ±0.001" 390" ±0.001" 392" ±0.001" 394" ±0.001" 396" ±0.001" 398" ±0.001" 400" ±0.001" 402" ±0.001" 404" ±0.001" 406" ±0.001" 408" ±0.001" 410" ±0.001" 412" ±0.001" 414" ±0.001" 416" ±0.001" 418" ±0.001" 420" ±0.001" 422" ±0.001" 424" ±0.001" 426" ±0.001" 428" ±0.001" 430" ±0.001" 432" ±0.001" 434" ±0.001" 436" ±0.001" 438" ±0.001" 440" ±0.001" 442" ±0.001" 444" ±0.001" 446" ±0.001" 448" ±0.001" 450" ±0.001" 452" ±0.001" 454" ±0.001" 456" ±0.001" 458" ±0.001" 460" ±0.001" 462" ±0.001" 464" ±0.001" 466" ±0.001" 468" ±0.001" 470" ±0.001" 472" ±0.001" 474" ±0.001" 476" ±0.001" 478" ±0.001" 480" ±0.001" 482" ±0.001" 484" ±0.001" 486" ±0.001" 488" ±0.001" 490" ±0.001" 492" ±0.001" 494" ±0.001" 496" ±0.001" 498" ±0.001" 500" ±0.001" 502" ±0.001" 504" ±0.001" 506" ±0.001" 508" ±0.001" 510" ±0.001" 512" ±0.001" 514" ±0.001" 516" ±0.001" 518" ±0.001" 520" ±0.001" 522" ±0.001" 524" ±0.001" 526" ±0.001" 528" ±0.001" 530" ±0.001" 532" ±0.001" 534" ±0.001" 536" ±0.001" 538" ±0.001" 540" ±0.001" 542" ±0.001" 544" ±0.001" 546" ±0.001" 548" ±0.001" 550" ±0.001" 552" ±0.001" 554" ±0.001" 556" ±0.001" 558" ±0.001" 560" ±0.001" 562" ±0.001" 564" ±0.001" 566" ±0.001" 568" ±0.001" 570" ±0.001" 572" ±0.001" 574" ±0.001" 576" ±0.001" 578" ±0.001" 580" ±0.001" 582" ±0.001" 584" ±0.001" 586" ±0.001" 588" ±0.001" 590" ±0.001" 592" ±0.001" 594" ±0.001" 596" ±0.001" 598" ±0.001" 600" ±0.001" 602" ±0.001" 604" ±0.001" 606" ±0.001" 608" ±0.001" 610" ±0.001" 612" ±0.001" 614" ±0.001" 616" ±0.001" 618" ±0.001" 620" ±0.001" 622" ±0.001" 624" ±0.001" 626" ±0.001" 628" ±0.001" 630" ±0.001" 632" ±0.001" 634" ±0.001" 636" ±0.001" 638" ±0.001" 640" ±0.001" 642" ±0.001" 644" ±0.001" 646" ±0.001" 648" ±0.001" 650" ±0.001" 652" ±0.001" 654" ±0.001" 656" ±0.001" 658" ±0.001" 660" ±0.001" 662" ±0.001" 664" ±0.001" 666" ±0.001" 668" ±0.001" 670" ±0.001" 672" ±0.001" 674" ±0.001" 676" ±0.001" 678" ±0.001" 680" ±0.001" 682" ±0.001" 684" ±0.001" 686" ±0.001" 688" ±0.001" 690" ±0.001" 692" ±0.001" 694" ±0.001" 696" ±0.001" 698" ±0.001" 700" ±0.001" 702" ±0.001" 704" ±0.001" 706" ±0.001" 708" ±0.001" 710" ±0.001" 712" ±0.001" 714" ±0.001" 716" ±0.001" 718" ±0.001" 720" ±0.001" 722" ±0.001" 724" ±0.001" 726" ±0.001" 728" ±0.001" 730" ±0.001" 732" ±0.001" 734" ±0.001" 736" ±0.001" 738" ±0.001" 740" ±0.001" 742" ±0.001" 744" ±0.001" 746" ±0.001" 748" ±0.001" 750" ±0.001" 752" ±0.001" 754" ±0.001" 756" ±0.001" 758" ±0.001" 760" ±0.001" 762" ±0.001" 764" ±0.001" 766" ±0.001" 768" ±0.001" 770" ±0.001" 772" ±0.001" 774" ±0.001" 776" ±0.001" 778" ±0.001" 780" ±0.001" 782" ±0.001" 784" ±0.001" 786" ±0.001" 788" ±0.001" 790" ±0.001" 792" ±0.001" 794" ±0.001" 796" ±0.001" 798" ±0.001" 800" ±0.001" 802" ±0.001" 804" ±0.001" 806" ±0.001" 808" ±0.001" 810" ±0.001" 812" ±0.001" 814" ±0.001" 816" ±0.001" 818" ±0.001" 820" ±0.001" 822" ±0.001" 824" ±0.001" 826" ±0.001" 828" ±0.001" 830" ±0.001" 832" ±0.001" 834" ±0.001" 836" ±0.001" 838" ±0.001" 840" ±0.001" 842" ±0.001" 844" ±0.001" 846" ±0.001" 848" ±0.001" 850" ±0.001" 852" ±0.001" 854" ±0.001" 856" ±0.001" 858" ±0.001" 860" ±0.001" 862" ±0.001" 864" ±0.001" 866" ±0.001" 868" ±0.001" 870" ±0.001" 872" ±0.001" 874" ±0.001" 876" ±0.001" 878" ±0.001" 880" ±0.001" 882" ±0.001" 884" ±0.001" 886" ±0.001" 888" ±0.001" 890" ±0.001" 892" ±0.001" 894" ±0.001" 896" ±0.001" 898" ±0.001" 900" ±0.001" 902" ±0.001" 904" ±0.001" 906" ±0.001" 908" ±0.001" 910" ±0.001" 912" ±0.001" 914" ±0.001" 916" ±0.001" 918" ±0.001" 920" ±0.001" 922" ±0.001" 924" ±0.001" 926" ±0.001" 928" ±0.001" 930" ±0.001" 932" ±0.001" 934" ±0.001" 936" ±0.001" 938" ±0.001" 940" ±0.001" 942" ±0.001" 944" ±0.001" 946" ±0.001" 948" ±0.001" 950" ±0.001" 952" ±0.001" 954" ±0.001" 956" ±0.001" 958" ±0.001" 960" ±0.001" 962" ±0.001" 964" ±0.001" 966" ±0.001" 968" ±0.001" 970" ±0.001" 972" ±0.001" 974" ±0.001" 976" ±0.001" 978" ±0.001" 980" ±0.001" 982" ±0.001" 984" ±0.001" 986" ±0.001" 988" ±0.001" 990" ±0.001" 992" ±0.001" 994" ±0.001" 996" ±0.001" 998" ±0.001" 1000" ±0.001" 1002" ±0.001" 1004" ±0.001" 1006" ±0.001" 1008" ±0.001" 1010" ±0.001" 1012" ±0.001" 1014" ±0.001" 1016" ±0.001" 1018" ±0.001" 1020" ±0.001" 1022" ±0.001" 1024" ±0.001" 1026" ±0.001" 1028" ±0.001" 1030" ±0.001" 1032" ±0.001" 1034" ±0.001" 1036" ±0.001" 1038" ±0.001" 1040" ±0.001" 1042" ±0.001" 1044" ±0.001" 1046" ±0.001" 1048" ±0.001" 1050" ±0.001" 1052" ±0.001" 1054" ±0.001" 1056" ±0.001" 1058" ±0.001" 1060" ±0.001" 1062" ±0.001" 1064" ±0.001" 1066" ±0.001" 1068" ±0.001" 1070" ±0.001" 1072" ±0.001" 1074" ±0.001" 1076" ±0.001" 1078" ±0.001" 1080" ±0.001" 1082" ±0.001" 1084" ±0.001" 1086" ±0.001" 1088" ±0.001" 1090" ±0.001" 1092" ±0.001" 1094" ±0.001" 1096" ±0.001" 1098" ±0.001" 1100" ±0.001" 1102" ±0.001" 1104" ±0.001" 1106" ±0.001" 1108" ±0.001" 1110" ±0.001" 1112" ±0.001" 1114" ±0.001" 1116" ±0.001" 1118" ±0.001" 1120" ±0.001" 1122" ±0.001" 1124" ±0.001" 1126" ±0.001" 1128" ±0.001" 1130" ±0.001" 1132" ±0.001" 1134" ±0.001" 1136" ±0.001" 1138" ±0.001" 1140" ±0.001" 1142" ±0.001" 1144" ±0.001" 1146" ±0.001" 1148" ±0.001" 1150" ±0.001" 1152" ±0.001" 1154" ±0.001" 1156" ±0.001" 1158" ±0.001" 1160" ±0.001" 1162" ±0.001" 1164" ±0.001" 1166" ±0.001" 1168" ±0.001" 1170" ±0.001" 1172" ±0.001" 1174" ±0.001" 1176" ±0.001" 1178" ±0.001" 1180" ±0.001" 1182" ±0.001" 1184" ±0.001" 1186" ±0.001" 1188" ±0.001" 1190" ±0.001" 1192" ±0.001" 1194" ±0.001" 1196" ±0.001" 1198" ±0.001" 1200" ±0.001" 1202" ±0.001" 1204" ±0.001" 1206" ±0.001" 1208" ±0.001" 1210" ±0.001" 1212" ±0.001" 1214" ±0.001" 1216" ±0.001" 1218" ±0.001" 1220" ±0.001" 1222" ±0.001" 1224" ±0.001" 1226" ±0.001" 1228" ±0.001" 1230" ±0.001" 1232" ±0.001" 1234" ±0.001" 1236" ±0.001" 1238" ±0.001" 1240" ±0.001" 1242" ±0.001" 1244" ±0.001" 1246" ±0.001" 1248" ±0.001" 1250" ±0.001" 1252" ±0.001" 1254" ±0.001" 1256" ±0.001" 1258" ±0.001" 1260" ±0.001" 1262" ±0.001" 1264" ±0.001" 1266" ±0.001" 1268" ±0.001" 1270" ±0.001" 1272" ±0.001" 1274" ±0.001" 1276" ±0.001" 1278" ±0.001" 1280" ±0.001" 1282" ±0.001" 1284" ±0.001" 1286" ±0.001" 1288" ±0.001" 1290" ±0.001" 1292" ±0.001" 1294" ±0.001" 1296" ±0.001" 1298" ±0.001" 1300" ±0.001" 1302" ±0.001" 1304" ±0.001" 1306" ±0.001" 1308" ±0.001" 1310" ±0.001" 1312" ±0.001" 1314" ±0.001" 1316" ±0.001" 1318" ±0.001" 1320" ±0.001" 1322" ±0.001" 1324" ±0.001" 1326" ±0.001" 1328" ±0.001" 1330" ±0.001" 1332" ±0.001" 1334" ±0.001" 1336" ±0.001" 1338" ±0.001" 1340" ±0.001" 1342" ±0.001" 1344" ±0.001" 1346" ±0.001" 1348" ±0.001" 1350" ±0.001" 1352" ±0.001" 1354" ±0.001" 1356" ±0.001" 1358" ±0.001" 1360" ±0.001" 1362" ±0.001" 1364" ±0.001" 1366" ±0.001" 1368" ±0.001" 1370" ±0.001" 1372" ±0.001" 1374" ±0.001" 1376" ±0.001" 1378" ±0.001" 1380" ±0.001" 1382" ±0.001" 1384" ±0.001" 1386" ±0.001" 1388" ±0.001" 1390" ±0.001" 1392" ±0.001" 1394" ±0.001" 1396" ±0.001" 1398" ±0.001" 1400" ±0.001" 1402" ±0.001" 1404" ±0.001" 1406" ±0.001" 1408" ±0.001" 1410" ±0.001" 1412" ±0.001" 1414" ±0.001" 1416" ±0.001" 1418" ±0.001" 1420" ±0.001" 1422" ±0.001" 1424" ±0.001" 1426" ±0.001" 1428" ±0.001" 1430" ±0.001" 1432" ±0.001" 1434" ±0.001" 1436" ±0.001" 1438" ±0.001" 1440" ±0.001" 1442" ±0.001" 1444" ±0.001" 1446" ±0.001" 1448" ±0.001" 1450" ±0.001" 1452" ±0.001" 1454" ±0.001" 1456" ±0.001" 1458" ±0.001" 1460" ±0.001" 1462" ±0.001" 1464" ±0.001" 1466" ±0.001" 1468" ±0.001" 1470" ±0.001" 1472" ±0.001" 1474" ±0.001" 1476" ±0.001" 1478" ±0.001" 1480" ±0.001" 1482" ±0.001" 1484" ±0.001" 1486" ±0.001" 1488" ±0.001" 1490" ±0.001" 1492" ±0.001" 1494" ±0.001" 1496" ±0.001" 1498" ±0.001" 1500" ±0.001" 1502" ±0.001" 1504" ±0.001" 1506" ±0.001" 1508" ±0.001" 1510" ±0.001" 1512" ±0.001" 1514" ±0.001" 1516" ±0.001" 1518" ±0.001" 1520" ±0.001" 1522" ±0.001" 1524" ±0.001" 1526" ±0.001" 1528" ±0.001" 1530" ±0.001" 1532" ±0.001" 1534" ±0.001" 1536" ±0.001" 1538" ±0.001" 1540" ±0.001" 1542" ±0.001" 1544" ±0.001" 1546" ±0.001" 1548" ±0.001" 1550" ±0.001" 1552" ±0.001" 1554" ±0.001" 1556" ±0.001" 1558" ±0.001" 1560" ±0.001" 1562" ±0.001" 1564" ±0.001" 1566" ±0.001" 1568" ±0.001" 1570" ±0.001" 1572" ±0.001" 1574" ±0.001" 1576" ±0.001" 1578" ±0.001" 1580" ±0.001" 1582" ±0.001" 1584" ±0.001" 1586" ±0.001" 1588" ±0.001" 1590" ±0.001" 1592" ±0.001" 1594" ±0.001" 1596" ±0.001" 1598" ±0.001" 1600" ±0.001" 1602" ±0.001" 1604" ±0.001" 1606" ±0.001" 1608" ±0.001" 1610" ±0.001" 1612" ±0.001" 1614" ±0.001" 1616" ±0.001" 1618" ±0.001" 1620" ±0.001" 1622" ±0.001" 1624" ±0.001" 1626" ±0.001" 1628" ±0.001" 1630" ±0.001" 1632" ±0.001" 1634" ±0.001" 1636" ±0.001" 1638" ±0.001" 1640" ±0.001" 1642" ±0.001" 1644" ±0.001" 1646" ±0.001" 1648" ±0.001" 1650" ±0.001" 1652" ±0.001" 1654" ±0.001" 1656" ±0.001" 1658" ±0.001" 1660" ±0.001" 1662" ±0.001" 1664" ±0.001" 1666" ±0.001" 1668" ±0.001" 1670" ±0.001" 1672" ±0.001" 1674" ±0.001" 1676" ±0.001" 1678" ±0.001" 1680" ±0.001" 1682" ±0.001" 1684" ±0.001" 1686" ±0.001" 1688" ±0.001" 1690" ±0.001" 1692" ±0.001" 1694" ±0.001" 1696" ±0.001" 1698" ±0.001" 1700" ±0.001" 1702" ±0.001" 1704" ±0.001" 1706" ±0.001" 1708" ±0.001" 1710" ±0.001" 1712" ±0.001" 1714" ±0.001" 1716" ±0.001" 1718" ±0.001" 1720" ±0.001" 1722" ±0.001" 1724" ±0.001" 1726" ±0.001" 1728" ±0.001" 1730" ±0.001" 1732" ±0.001" 1734" ±0.001" 1736" ±0.001" 1738" ±0.001" 1740" ±0.001" 1742" ±0.001" 1744" ±0.001" 1746" ±0.001" 1748" ±0.001" 1750" ±0.001" 1752" ±0.001" 1754" ±0.001" 1756" ±0.001" 1758" ±0.001" 1760" ±0.0



BILL OF MATERIAL (B.O.M.)			
ITEM NO.	QTY.	DESCRIPTION	FILE/DWG. NAME
1	1	BRACKET,FWF,FILTER,CARBON - PR	2020040006
2	1	FILTER HOUSING .50 X 10	0713020873
3	1	CHARCOAL FILTER 10IN	0803004773
4	1	KZ VALVE FWF 0.50	1401105698
5	1	VALVE CHECK .50 FPT WITH VITO	14012117Ar
6	1	ELB90 0.50 FPT x FPT	0101012583
7	1	NIPPLE 0.50 NPT x 3.00	0101372530
8	2	NIPPLE 0.50 NPT x CL	01013725CL
9	1	FLANGE 0.50 FPT	0101782583
10	1	ELBOW,PP,1/2 ODX1/2 FT	0204012569
11	4	ELBOW,PP,1/2 ODX1/2 MT	0204022569
12	1	FITTING,PP,1/2 ODX1/2 MT	0204092569
13	5	NUT HEX .25-20 W-INSERT SS	061060045000
14	1	GASKET,FLANGE,EDPM,0.50	2635102000
15	1	TUBING,PARAFLEX,BLACK,0.50 x 3.00L	0312124269
16	1	TUBING,PARAFLEX,BLACK,0.50 x 33.00L	0312124269
17	1	TUBING,PARAFLEX,BLACK,0.50 x 47.00L	0312124269
18	4	NUT ,HEX,1/2-13,SS	061010067000
19	10	WASHER,FLAT,OS,1/4",SS	061100043000
20	4	WASHER,FLAT,OS,5/16",SS	061100049000
21	8	WASHER,FLAT,OS,1/2",SS	061100066000
22	4	WASHER,LOCK,1/2",SS	061120066000
23	5	SCREW,HEX HEAD, .25-20x1",SS	061142145016
24	4	SCREW,HEX HEAD,1/2-13x2 1/2",SS	061142167040
25	4	SCREW,HEX A, .31x1.25,SS	061172149020
26	4	PIPE,PVC,S80, .50x0.75L	0301098800

DRAWING STATUS:

PRODUCTION RELEASE

Parker | **Sea Recovery**

Parker Water Purification
2630 El Presidio St
Carson, California, 90810 USA
Tel: 310-637-3400 Fax: 310-999-6262
www.parker.com

PROPRIETARY NOTICE: This drawing includes confidential information of Parker Hannifin Corporation, which is provided for the sole purpose of permitting the recipient to evaluate the design or proposal submitted hereunder. In consideration of receipt of this document, the recipient agrees to maintain such information in confidence and not reproduce or otherwise disclose the information to any person outside the group directly responsible for evaluation of its contents, except that there is no obligation to maintain the confidentiality of any information that becomes publicly known through no fault of recipient. By receiving and accepting this drawing the recipient agrees to the stated terms.

TOLERANCES:
UNLESS OTHERWISE NOTED,
ALL DIMENSIONS ARE IN INCHES (IN) AND MILLIMETER (mm)
FRACTIONS: ±.010" ±1.5mm
X ±.01" ±2.5mm
XX ±0.01" ±0.51mm
XXX ±0.005" ±0.127mm
ANGLES: ±1 DEG.

SCALE:

CUSTOMER: CORAL SEA

PROJECT: CORAL SEA

TITLE: CORAL SEA (FWF - Yes) (ANSI PVC)

PREPARED BY: RD DATE: 07/08/2014 DWG NO.: P550-06-02 REV.: A

CHECKED BY: JB DATE: 07/08/2014 CUSTOMER P.O.

APPROVED BY: CP DATE: 07/08/2014 WEIGHT: 20.712 lbmass

VALVES

- GATE (GA)
- GLOBE (GV)
- BALL (BV)
- NEEDLE (NV)
- CHECK (CK)
- SPRING LOADED CHECK (OK)
- BUTTERFLY (BF)
- DIAPHRAGM (DV)
- RELIEF AND/OR SAFETY (ARV)
- RUPTURE DISC (VR)
- 3-WAY
- 3-WAY SOLENOID
- 4-WAY SOLENOID
- 4-FUNCTION VALVE
- SAMPLE VALVE (SV)
- FOOT VALVE
- N.O. - NORMALLY OPEN
- N.C. - NORMALLY CLOSED

CONTROL VALVES/ACTUATORS

- PRESSURE REGULATOR VALVE WITH PRESSURE GAUGE
- MOTORIZED ACTUATOR
- MOTORIZED ACTUATOR WITH MANUAL OVERRIDE
- DOUBLE ACTING ACTUATOR
- DOUBLE ACTING ACTUATOR WITH LIMIT STOP
- DOUBLE ACTING ACTUATOR WITH SPRING TO CLOSE
- DOUBLE ACTING DIAPHRAGM ACTUATOR
- DOUBLE ACTING DIAPHRAGM ACTUATOR WITH HANDWHEEL
- DOUBLE ACTING DIAPHRAGM ACTUATOR WITH LIMIT STOP
- DOUBLE ACTING DIAPHRAGM ACTUATOR WITH SPRING TO CLOSE
- DOUBLE ACTING DIAPHRAGM ACTUATOR WITH SPRING TO OPEN
- SOLENOID VALVE
- AIR OPERATOR W/POSITIONER

EQUIPMENT SYMBOL

- MIXER OR AGITATOR (MX)
- INLINE STATIC MIXER
- HEATER (HE)
- INJECTION QUILL
- EDUCTOR/EJECTOR (ED)
- POSITIVE DISPLACEMENT PUMP W/MANUAL STROKE ADJUSTMENT (MP)
- POSITIVE DISPLACEMENT PUMP W/PNEUMATIC STROKE ADJUSTMENT (NP)
- POSITIVE DISPLACEMENT PUMP W/ELECTRIC STROKE ADJUSTMENT (EP)
- ROTARY COMPRESSOR OR BLOWER
- AIR FILTER
- BLOWER OR FAN (BL OR FN)
- VACUUM PUMP (VP)
- DIAPHRAGM PUMP (DP)
- CENTRIFUGAL PUMP (P)
- HIGH PRESSURE PUMP (P)
- DESICCANT BREATHER
- VENT PIPE
- Y-STRAINER (YS)
- RUPTURE DISC
- DIAPHRAGM SEAL
- PULSATION DAMPENER (PD)
- CALIBRATION COLUMN (CC)
- RING DAMPENER

RO/UF MODULE

- MEDIA FILTER
- CARTRIDGE FILTER (CF) HOUSING
- ROOF TANK (TK)
- ROOF TOP TANK (TK) CONE BOTTOM TANK (TK)
- OPEN TOP TANK (TK) WITH COVER
- ENERGY RECOVERY TURBINE (ERT)

MISCELLANEOUS SYMBOLS

- LINE, EQUIPMENT OR PRODUCT REFERENCES INTO OR LEAVING DWG.
- TE - TIE IN TO PIPING BY OTHERS
- 304 - CPVC - PIPING MATERIAL SPEC. BREAK

LIGHT COLOR LEGEND

- (A) AMBER
- (B) BLUE
- (C) GREEN
- (R) RED
- (W) WHITE

SOLENOID VALVE OPERATION

- 3-WAY
- 4-WAY
- FAIL OPEN TO PATHS A-C AND D-B

AIR SUPPLY

- NITROGEN SUPPLY
- FLOW SIGHT GLASS
- SIGHTGLASS (ON VESSEL)
- LEVEL GAUGE
- CONCENTRIC REDUCING
- ECENTRIC REDUCING
- ENCLOSURE (CAP)
- FLANGE
- END CLOSURE (BLIND FLANGED)
- END CLOSURE (MC PLUG)
- QUICK DISCONNECT
- UNION
- SANITARY CONNECTION
- FLOOR DRAIN OR SUMP

INSTRUMENT LINE SYMBOLS

- PNEUMATIC SIGNAL
- ELECTRICAL SIGNAL (ANALOG - 4-20mA OR 1-10 VDC)
- ELECTRICAL SIGNAL (DISCRETE)
- ELECTRICAL SIGNAL (FREQUENCY OR PULSE)
- ELECTRICAL POWER (VAC-SINGLE PHASE OR VDC)
- ELECTRICAL POWER (THREE PHASE)
- CAPILLARY TUBING (FILED TURN)
- CONNECTION TO PROCESS, OR INSTRUMENT SUPPLY

FLOW MEASUREMENT SYMBOLS

- PADDLE WHEEL FLOW SENSOR
- VORTEX SENSOR
- SONIC FLOW SENSOR
- INLINE FLOW INDICATOR (ROTAMETER)
- FLOW CONTROL (RESTRICTOR)
- MAGNETIC FLOW ELEMENT

INSTRUMENT SYMBOLS

- LOCALLY MOUNTED
- PANEL MOUNTED (MAIN OR REMOTE)
- PILOT LIGHT
- SHARED DISPLAY (CRT) AND/OR SHARED CONTROL

CONTROL SYMBOLS

- DISCRETE INPUT TO PLC
- DISCRETE OUTPUT FROM PLC
- ANALOG INPUT TO PLC
- ANALOG OUTPUT FROM PLC

- NOTES:
1. THE DESCRIPTION OF AN ANALYTICAL VARIABLE FUNCTION (pH, SiO₂, O₂, ETC.) SHALL BE SHOWN OUTSIDE THE INSTRUMENT SYMBOL.
EXAMPLE:
2. FOR A CONTROL STATION, SUBSTITUTE THE LETTER "X" FOR THE LETTER "P".
EXAMPLE:
3. ADD THE SUFFIX L (LOW), LL (LOW-LOW), H (HIGH), HH (HIGH-HIGH), HL (HIGH-LOW), AS REQUIRED.
EXAMPLE:
4. ADD THE SUFFIX L (CLOSED) OR H (OPEN) TO VALVE POSITION LIGHTS AS REQUIRED.
EXAMPLE:
5. AUDIBLE/VISIBLE ALARMS SHALL HAVE AN "A" SUFFIX. VISIBLE-ONLY ALARMS SHALL HAVE A "V" SUFFIX AND UTILIZE THE PILOT LIGHT SYMBOL. THE "A" OR "V" SHALL BE FOLLOWED BY THE APPROPRIATE SUFFIX AS SHOWN IN NOTE 3. EXAMPLE:

INTERLOCKING FUNCTIONS

- SPECIAL IDENTIFICATION
AP - ANALYZER TEST CONNECTION
D - DRAIN
FO - ORIFICE (RESTRICTION)
PP - PRESSURE TEST CONNECTION
RSE - RUPTURE DISC
PSV - PRESSURE/VACUUM
SDI - SALT DENSITY INDEX TEST CONNECTION
SP - SAMPLE
TP - TEMPERATURE TEST CONNECTION
TW - THERMOWELL
YL - EQUIPMENT STATUS LIGHT
DC - DOUBLE CONTAINED

PIPING MATERIAL ABBREVIATIONS

- CL - CAST IRON
- CCPVC - CHLORINATED POLYVINYL CHLORIDE
- C.S. - CARBON STEEL
- D.I. - DUCTILE IRON
- DSS - DUPLEX STAINLESS STEEL
- EPSS - 316L STAINLESS STEEL (ELECTRO POLISHED)
- EQPVC - ESOLOLEAN CPVC
- FPP - FIBER RE-INFORCED PLASTIC
- GL - GALVANIZED IRON
- GPVC - POLYVINYL CHLORIDE
- PPL - POLYPROPYLENE LINED CARBON STEEL
- CPVC - POLYVINYL CHLORIDE
- PVF - POLYVINYLENE FLUORIDE
- PVDF - PVDF HEADLESS & CRVICE FREE
- PVFL - PVDF LINED
- SEP - STEEL GALVANIZED
- TRE - TEFLON
- TREL - TEFLON LINED (PTFE)
- 304 - 304 STAINLESS STEEL
- 304L - 304L STAINLESS STEEL
- 316 - 316 STAINLESS STEEL
- 316L - 316L STAINLESS STEEL

- 6. POWER/DISCONNECT SWITCH SHALL HAVE THE FOLLOWING SUFFIX:
POWER DISCONNECT SWITCHES SHALL UTILIZE THE SUFFIX "DIS".
POWER FROM THE MCB/BREAKER SHALL UTILIZE THE SUFFIX "L".

EXAMPLES:

- DISCONNECT SWITCH
- MCP BUCKET/BREAKER

HAND SWITCH FUNCTIONS

- HOA - HAND-OFF-AUTO
- OCA - OPEN-CLOSE-AUTO
- OO - OFF-ON
- 1,2 - DEVICE SELECT

EXAMPLES:

- HOA
- 1,2

PUSHBUTTON (MOMENTARY CONTACT)

EXAMPLES:

DRAWING STATUS: RELEASED FOR PRODUCTION

PROPRIETARY NOTICE: This drawing includes confidential information of Parker Hannifin Corporation, which is provided for the sole purpose of permitting the recipient to evaluate the design or proposed submitted herewith. In consideration of receipt of this document, the recipient agrees to maintain such information in confidence and not reproduce or otherwise disclose the information to any person outside the group directly responsible for evaluation of its contents, except that there is no obligation to maintain the confidentiality of any information that becomes publicly known through no fault of recipient. By receiving and accepting this drawing the recipient agrees to the stated terms.

UNLESS OTHERWISE NOTED, ALL DIMENSIONS ARE IN INCHES (IN) AND MILLIMETER (mm)

FRACCTIONS: 1/8" = 3.175mm, 1/4" = 6.35mm, 3/8" = 9.525mm, 1/2" = 12.7mm, 5/8" = 15.875mm, 3/4" = 19.05mm, 7/8" = 22.225mm, 1" = 25.4mm

ANGLES: ±1 DEG.

SCALE: NTS

CUSTOMER: STANDARD PROJECT: STANDARD

TITLE: CORAL SEA 6800 REVERSE OSMOSIS SYSTEM PROCESS AND INSTRUMENTATION DIAGRAM

PREPARED BY: RD DATE: 6/5/15 DWG NO.: CS6800-A551-PID RE -

CHECKED BY: JB DATE: 6/5/15 CUSTOMER P.O.

JB 6/5/15

